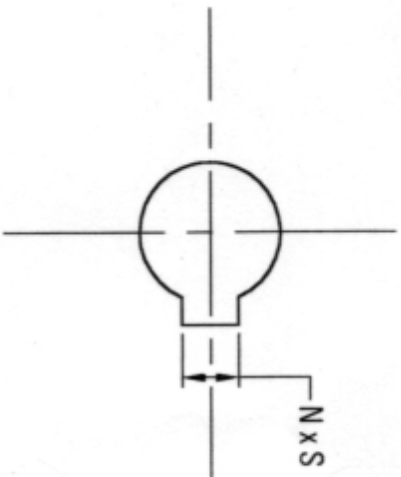
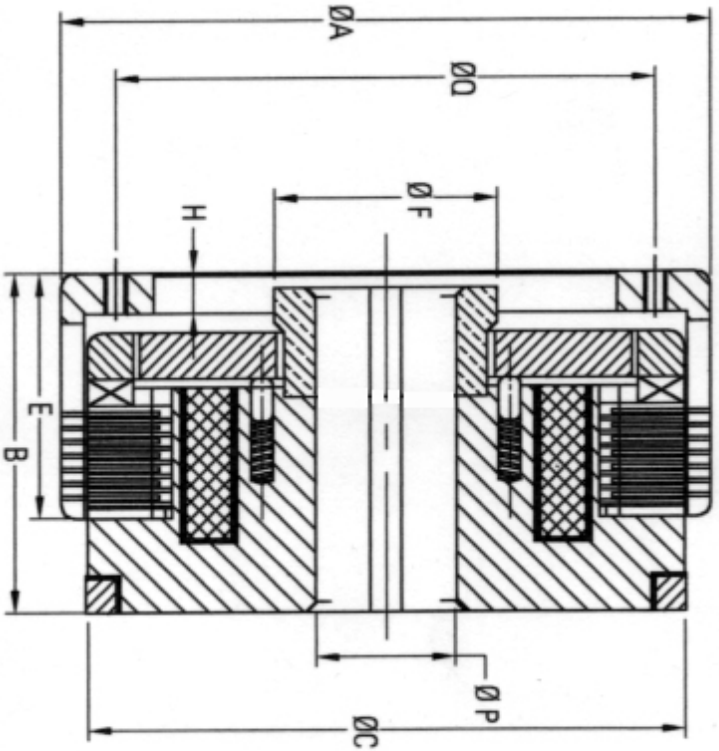


KZ SERIES



SR NO.	MODEL NO.	TORQUE IN (kg-m)	OVERALL DIMENSIONS (MM)											MOUNTING DIM. (mm)		KEY WAY DIM. (mm)		COIL RESISTANCE at 25°C (ohms)	POWER CONSUMP. at 25°C (WATTS)	VOLTAGE (VOLTS)
			A	B	C	E	F	G	H	Q	NO. OF HOLES	SIZE	P (MAX)	WIDTH (N x S)						
1	01KZA-S	20	12	100	45	100	33	35	42	5	85	4	M6	22	2 x 6	22	26	24V		
2	02KZA-S	40	25	110	48	110	34	42	45	5	90	4	M6	28	2 x 6	22	27			
3	04KZA-S	63	40	120	52	120	39	48	48	6	100	6	M6	32	3 x 6	17	33			
4	06KZA-S	100	63	132	55	132	43	52	50	7	105	6	M8	35	3 x 6	13	43			
5	10KZA-S	160	100	147	58	145	45	58	53	7	120	6	M8	42	3 x 8	13	43			
6	16KZA-S	250	160	162	62	160	47	65	57	7	135	6	M8	48	3 x 8	12	47			
7	25KZA-S	400	250	182	68	180	52	72	63	8	155	6	M10	55	3 x 10	10.5	55			
8	41KZA-S	630	400	202	76	202	61	82	70	9	170	6	M10	60	3 x 10	9.3	62			
9	64KZA-S	1000	630	235	86	230	70	95	80	10	200	6	M12	70	3 x 14	8.3	70			
10	100KZA-S	1600	1000	270	100	255	75	105	92	12	235	6	M12	80	3 x 14	7.3	79			
11	161KZA-S	2500	1600	310	115	295	90	120	107	14	260	6	M12	90	3 x 16	6	97			

NOTE : ALSO AVAILABLE : 250 KZA-S, 400 KZA-S, 630 KZA-S AND 1000 KZA-S ON REQUEST (STEEL - SINTERED BRONZE Combination)
 ALSO AVAILABLE : KZA-T VERSIONS OF ALL SIZES FOR DRY APPLICATIONS (STEEL - ORGANIC LINING Combination)